

PACIFIC PARKWAY CENTER

3,512 Sq. Ft.
Office Space For Lease

12909
PACIFIC PARKWAY CENTER

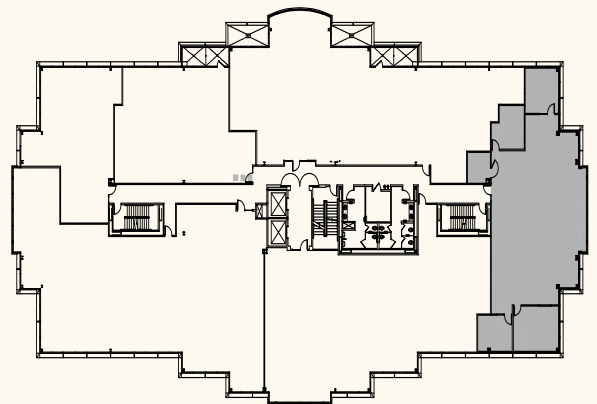
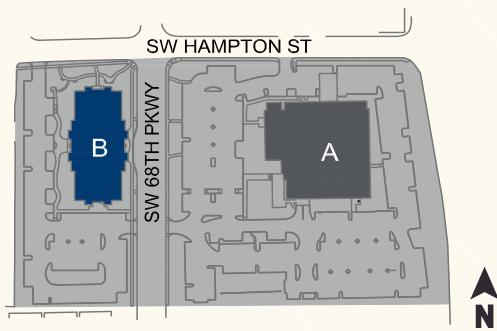
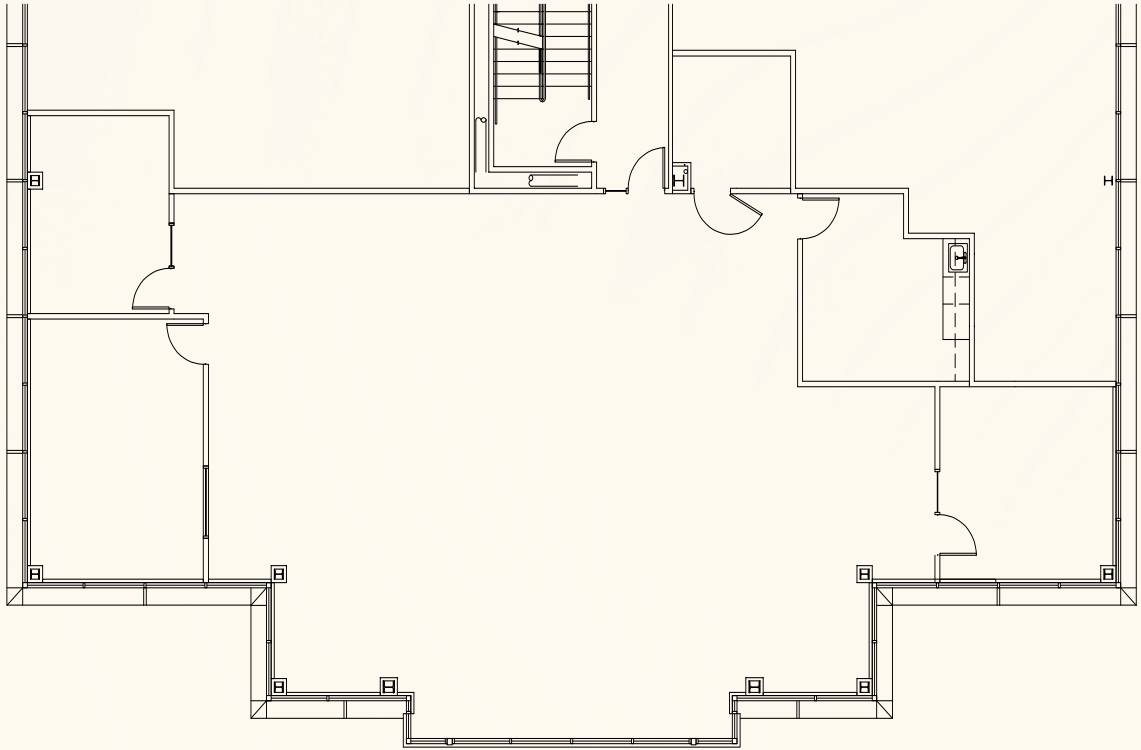
12909

12909 SW 68th Pkwy, Suite 460, Tigard, OR 97223

PACTRUST

Space Plan | Suite 460

PacTRUST



Building Plan



Key Features



3,512 sq. ft

Enjoy a Portland office location while benefiting from Washington County's favorable business tax structure

End suite

Building conference room

Upgraded common areas

Immediate access to Interstates 5 and 217

4/1,000 parking ratio

Nearby amenities and services

Lease Rate:
\$36.00/sq. ft./yr.

Full Service



Leasing Contacts

Jake Bigby
jakeb@pactrust.com

Caitlin Knecht
caitlink@pactrust.com

503.624.6300
www.pactrust.com

Owned & Managed by
PacTrust

Pacific Parkway Center
Office Space For Lease

12909 SW 68th Pkwy
Suite 460
Tigard, OR 97223

